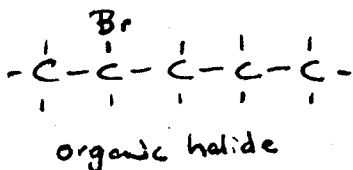
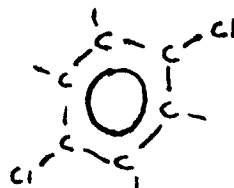


In the following questions, the IUPAC names of a variety of hydrocarbon derivatives are provided. Draw a structural diagram for each name and identify the organic family to which the compound belongs.

1. 2-bromopentane



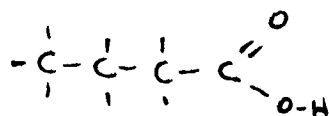
2. 1,4-dichlorobenzene



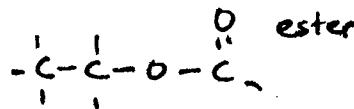
aromatic organic halide

3. butanoic acid

carboxylic acid

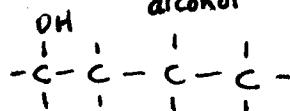


4. ethyl methanoate



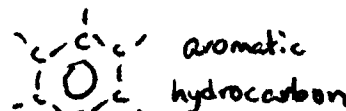
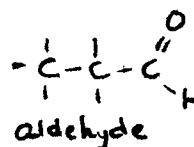
5. 1-butanol

alcohol

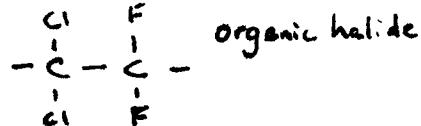


6. propanal

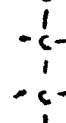
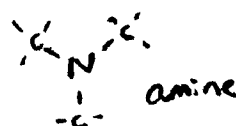
ethylbenzene



7. 1,1-dichloro-2,2-difluoroethane

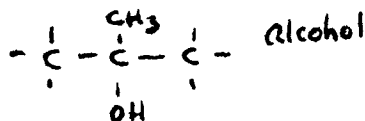


8. trimethylamine



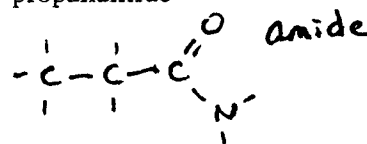
9. 2-methyl-2-propanol

alcohol

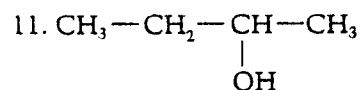


10. propanamide

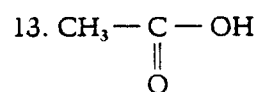
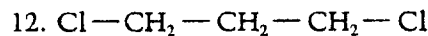
amide



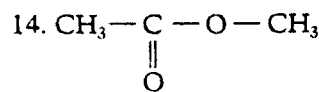
Communicate acceptable English IUPAC names for the following structural models.



2-butanol

ethanoic acid  
(acetic acid)

1,3-dichloropropane

methyl ethanoate  
(acetate)